

Chapter 3

Basic Vehicle Control



Getting Ready to Drive

- **Outside checks**
- Walk around the car
- Check the tires (inflated properly, direction facing)



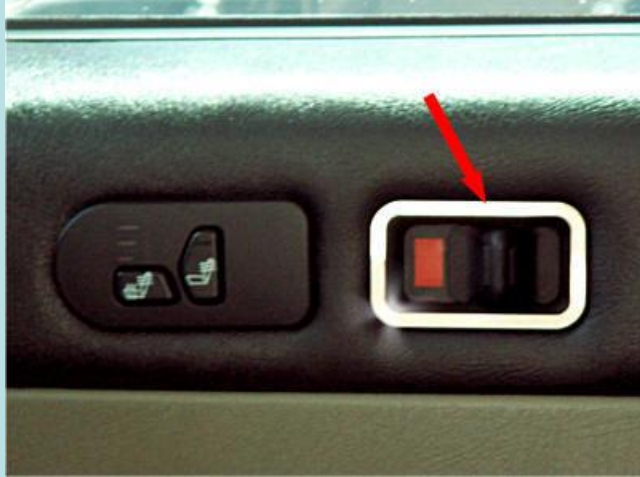
Getting Ready to Drive

- Check windshield, windows, headlights, taillights are clear (snow)
- Check inside vehicle for unwanted passengers.



Getting into the car

- Enter from curbside
- Have keys ready if entering from the street side.
- Get in quick
- Lock your doors.



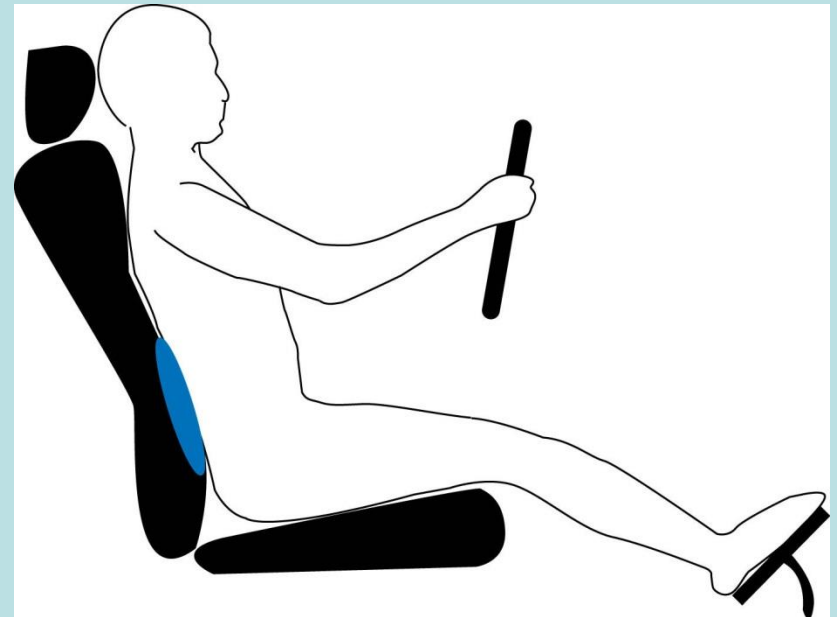
Inside Checks

- Get comfortable
- Adjust seat so you can reach everything
- Adjust head rests
- Adjust rear view mirror
- Adjust outside mirrors
- Put on seatbelt



Inside Checks

- Always adjust seats before starting to drive.
- Hands At least 10 inches from the steering wheel.
- Slight bend in the knees with right heel on floor.
- (rotate foot from gas to brake)



Starting the Car

- Make sure you are in Park
- Keep foot off gas pedal
- Turn on the key



Starting the Car

- INSTRUMENT PANEL TELLS YOU HOW YOUR CAR IS OPERATING!
- **Check gages, lights & fuel**
- WARNS YOU OF ANY PROBLEMS!



Automatic Transmission

- “P” Park – locks the Transmission. Never shift into Park when the car is moving.
- “R” Reverse - for backing (Backup lights)
- “N” Neutral Allows the car to roll without engine power.
- “D” Drive for moving forward
- “1” & “2” Use First & Second for going slow, hard pulling, steep hill, deep snow.



Putting the car in Motion

- **Foot on the brake pedal.**
- **Lever in “DRIVE”**
- **Check Mirrors & blind spots.**
- **Pulling away from curb, use turn signal.**



Instrument Panel

- Speedometer
- Odometer
- Tachometer
- Fuel Gauge



Oil pressure gauge or warning light



- Oil Pressure Light or Gauge
- Tells you if oil is not circulating.
- If not circulating must stop car immediately call for a tow truck.



Temperature & Alternator warning light or gauge



- Temperature Light or Gauge.
- Tells the engine temp.
- If car starts to over heat, you must stop immediately shut the engine off.



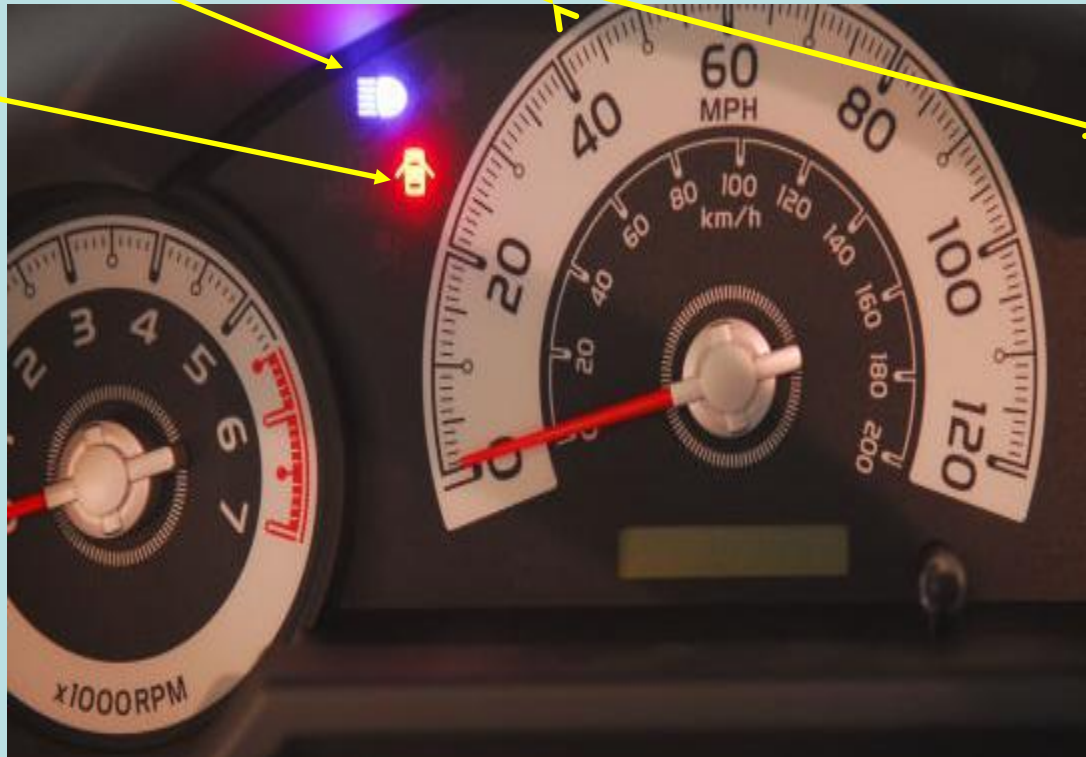
Other Warning Lights

- Brakes/ABS
- Safety Belt
- Tire pressure lights



Other Warning Lights

- Air Bag
- Turn signals
- Bright Lights
- Door Ajar



Vehicle Controls

- **Steering Wheel** - May be adjustable adjustable.
- tilt the wheel so you can see the speedometer and have the air bag make contact with the chest.



Vehicle Controls

- Ignition/starter switch
- Start the engine by placing key into the ignition switch



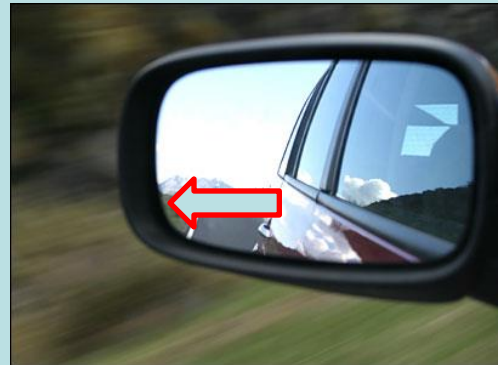
Foot Controls Manual Transmission

- Gas Pedal is on the right
- Brake – middle
- Clutch -Left



Devices for Safety

- Safety Belts
- Head Restraints
- Inside rear view mirror
- Outside Mirrors
- Horn
- Wipers
- Light Switch

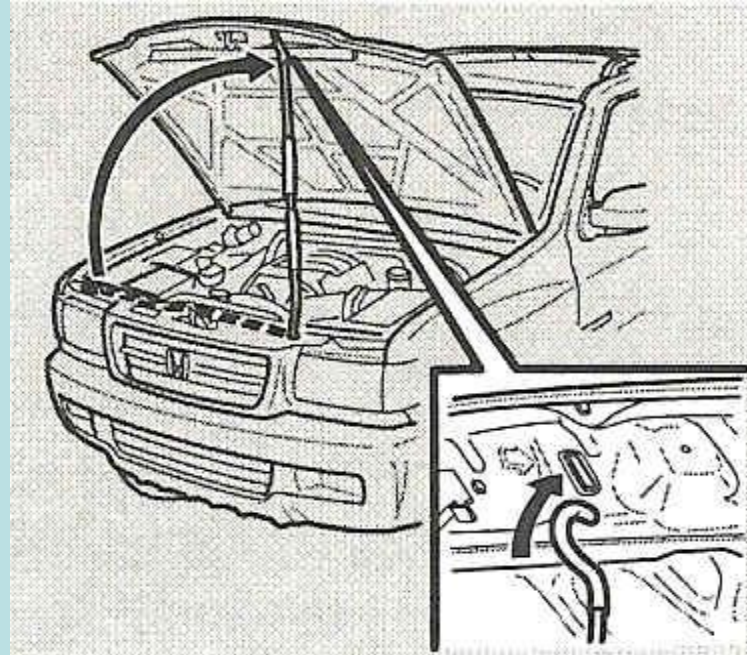
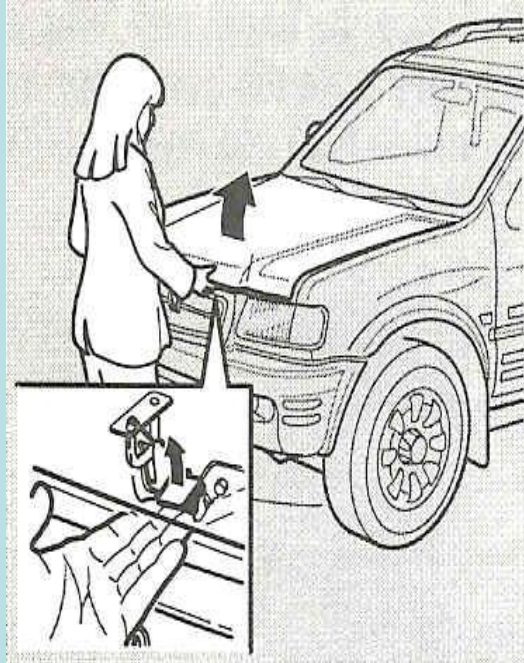
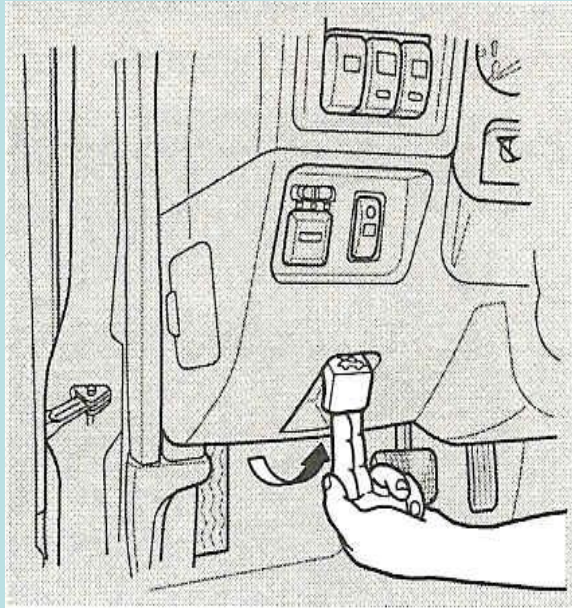


Devices for Safety

- Air Bags
- Side impact Safety Bags
- Hazard lights



- **Hood release lever-** you will need to operate a second release in the front of the vehicle before the hood will open.

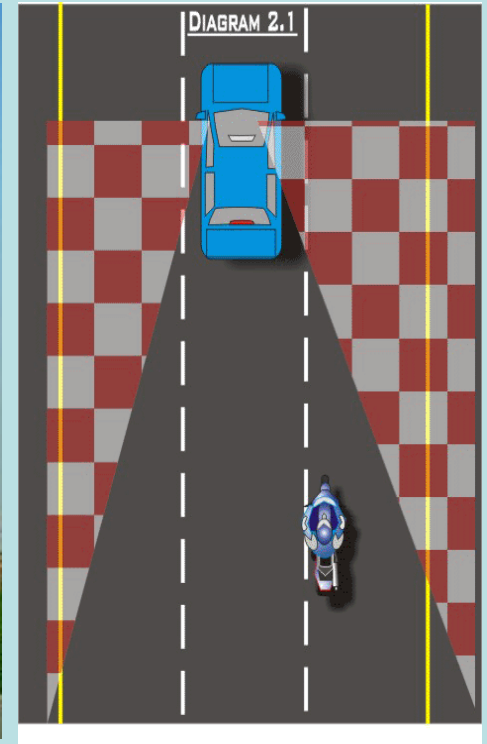
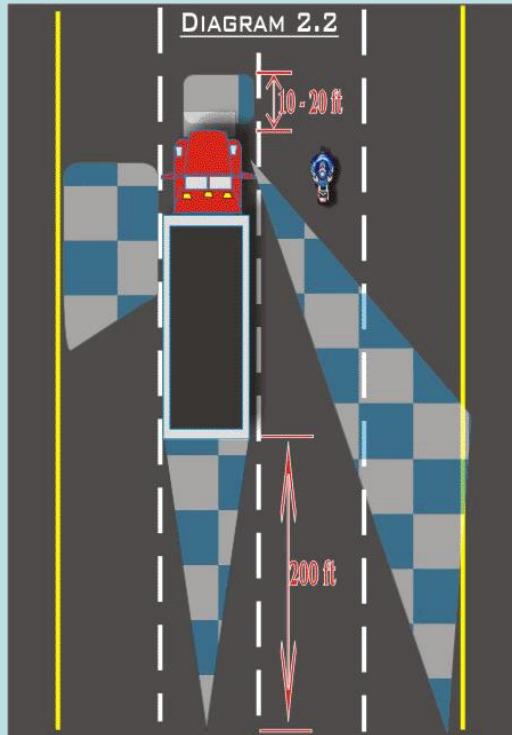


- **Sun visor** - located above the windshield, helps cut glare from the sun.



Blind Spots

- Even with the mirrors adjusted properly, there are areas the driver can not see with out turning his/her head.



Blind Spots

- Blind spots when backing



Devices for Comfort

- Heater
- Air Conditioner
- Seat adjustment



Seat adjustment lever