

Driving in Adverse Conditions

Reduced Visibility



Driving in Adverse Conditions

- Driving is difficult under normal conditions..
- When you add snow, ice, rain and visibility problems it becomes a greater challenge.



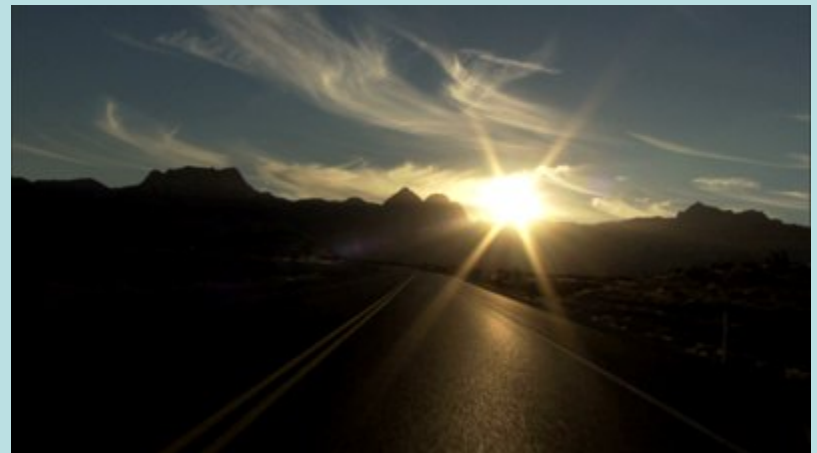
Reduced Visibility

- What can reduce your visibility?
- **Dirty Windows** Keep the windows clean inside and out



Reduced Visibility

- **Sun Glare and Driving during Dawn & Dusk** Use the Sun Visor, sun glasses, & keep the windows clean.



Reduced Visibility

- Fog will reduce your ability to judge distance and speed.
- Huge numbers of cars can be involved in fog related collisions.
- Some have been over 100 cars.



Reduced Visibility

- When visibility is reduced...
- Slow down and give yourself more time.
- Scan more frequently.
- Predict others will maneuver into your intended path of travel.
- Position your vehicle ahead of time with an extra space cushion.
- Executing driving actions gently so others know what you are doing.

Visibility in Rain and Snow

- Rain & Snow will reduce your visibility.
- Make sure your windshield wipers are in good operating condition before winter arrives.



- **Night driving use your** Low beam headlights at night and when the wipers are on.
- When do you use the **High Beams**?



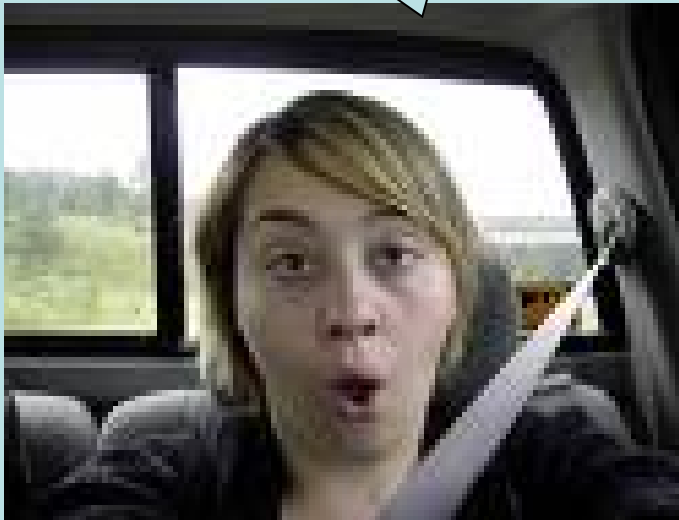
- Make sure to use your _____ beam lights in the rain & snow. Using your bright lights will reflect the light back at you.
- Clear your windows and all lights of all snow before driving.
- Slush & snow can build up on your wipers.



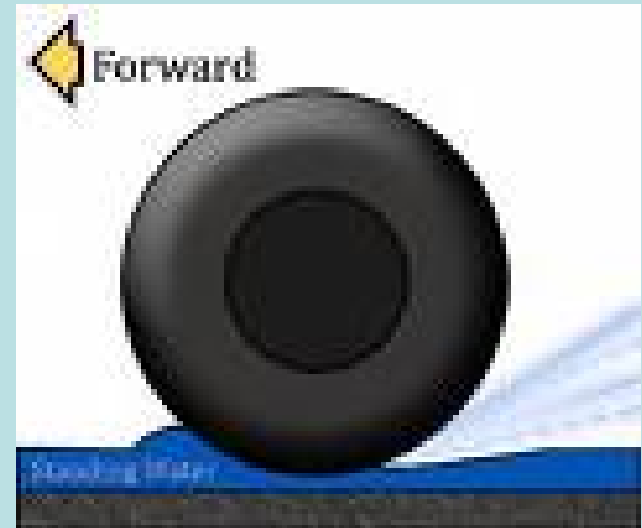
- Trucks can splash water, cutting your visibility



What should I
do?



- What is Hydroplaning?
- Hydroplaning occurs when your tires lose contact with the road, riding on a small layer of water.
- What can you do to avoid it?
- **Slow down in rain** and make sure you have good tires.



Driving in Deep Water

- If you don't know how deep the water is, don't try and drive through it.



Snow

- Look at New York 2008.



- This isn't New York but pretty cool driving through here.



Tips for Driving in Snow

- **Slow Down**
- Gentle acceleration,
- Steering and Braking.
- Prepare your car
- Snow tires,
- new wiper blades,
- Shovel
- Extra clothes



Driving on Ice

- **Black Ice**
- **Ice on Bridges**
- **Ice in Tire Tracks**



Stopping Distances



Skidding

- A locked wheel or spinning wheel provides no steering control.
- Never give up trying to correct a skid.
- Brake early to avoid locking the wheels.
- Controlled braking – braking without locking the wheels.
- ABS brakes

